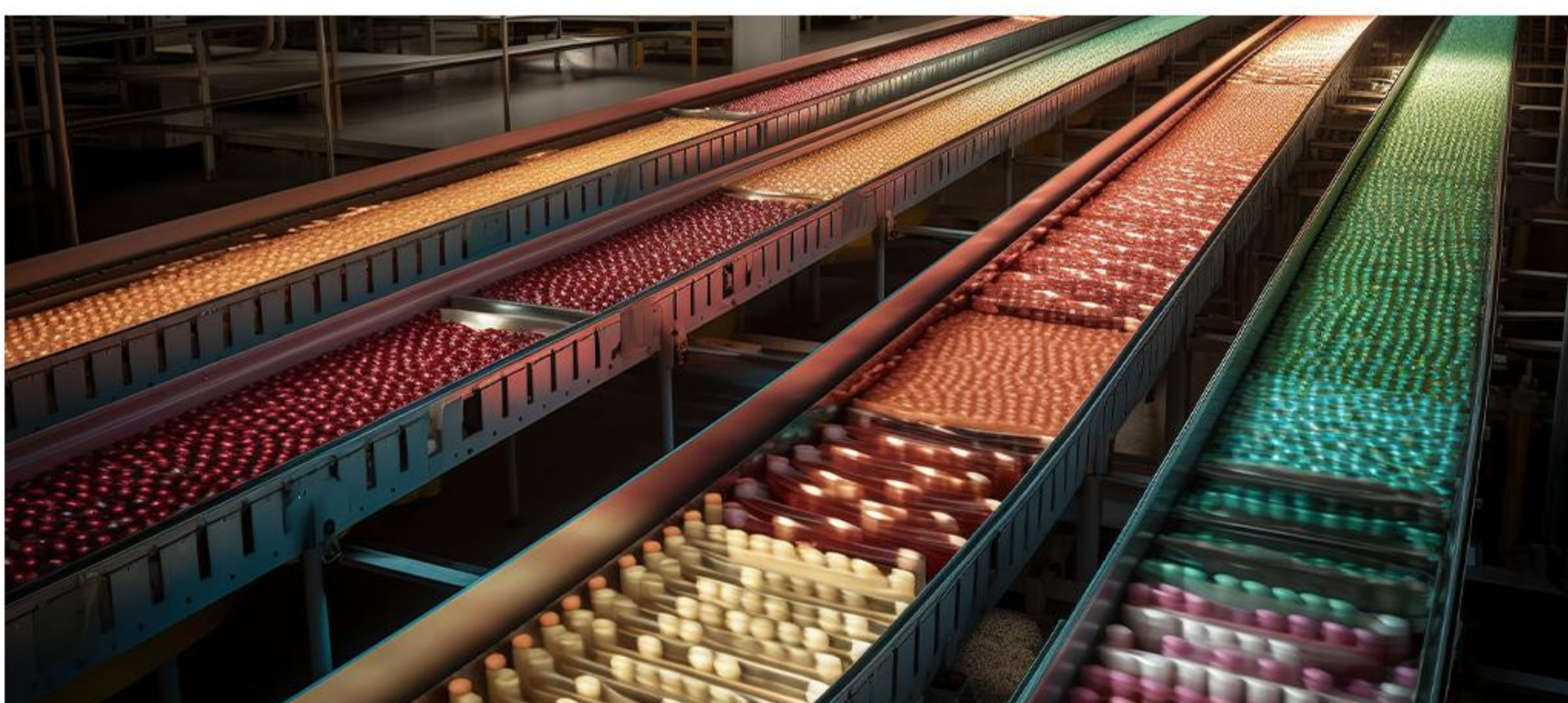


GL1402

2K 14 μm RESOLUTION GLOBAL SHUTTER LINE SCAN CMOS IMAGE SENSOR

GL1402 is a 2K, high-performance linear array CMOS image sensor. The sensor uses a pixel size of 14 μm and has the characteristics of high sensitivity and high line frequency. **GL1402** provides users with black and white and color versions, which are suitable for the detection of black and white and color objects respectively. The black and white version supports single-line and three-line modes, and the color version supports three-line modes. Each line is spaced at 14 μm to minimize color crosstalk. **GL1402** uses a 12 bit ADC and transmits data through 4 pairs of Sub-LVDS interfaces, with a maximum data rate of 2.08 Gbps, a maximum line frequency of 81 kHz in single-wire mode, and a maximum line frequency of 27 kHz in three-wire mode. The exposure time of each row of pixels can be independently controlled to obtain better imaging effects. **GL1402** consumes less than 420 mW at the highest line frequency and is packaged in a 54 pins CLCC with a package size of 38 x 7.4 mm.



Key Features and Benefits

- ▶ Cost Efficient
- ▶ High Frame Rate
- ▶ High Dynamic Range
- ▶ Low Power Consumption

Applications

- ▶ Automation & Inspection
- ▶ Tomography (OCT)

