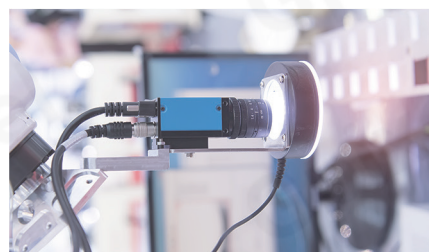
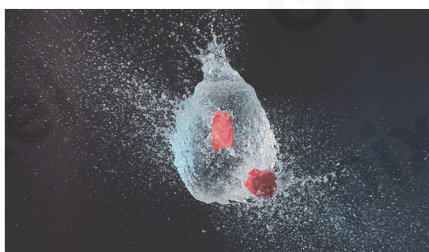
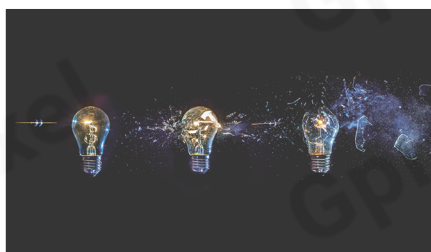


# GSPRINT Series

## HIGH SPEED IMAGE SENSORS

GSPRINT is Gpixel's high-speed global shutter product family, including 21MP, 10MP, and 2MP sensors. GSPRINT sensors are designed with the latest 4.5  $\mu\text{m}$  global shutter pixels achieving more than 30  $\text{ke}^-$  charge capacity and less than 4  $\text{e}^-$  rms read noise. Using an advanced 65 nm CIS process with light pipe technology, the sensor achieves >65% QE and more than 1/40,000 shutter efficiency. [GSPRINT4521](#) achieves 1000 fps at full resolution in 8-bit mode, 500 fps in 10-bit mode, and 250 fps in 12-bit mode. [GSPRINT4510](#) delivers 1920 fps at full resolution in 8-bit mode, 1000 fps in 10-bit mode, and 480 fps in 12-bit mode. [GSPRINT4502](#) achieves 3460 fps at full resolution in 8-bit mode, 1782 fps in 10-bit mode, and 852 fps in 12-bit mode. ROI and on-chip binning modes can be used to further increase the frame rates. Lower frame rates are enabled by multiplexing to a reduced number of output channels (down to 4 channels). [GSPRINT4510](#) and [GSPRINT4521](#) are pin compatible and packaged in a 454-pin uPGA ceramic package.



### Product Family Features

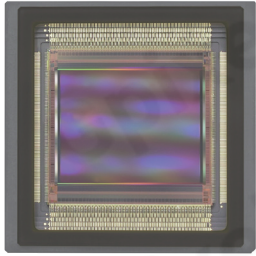
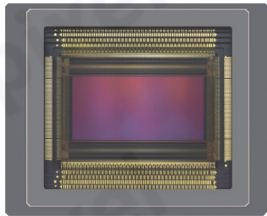
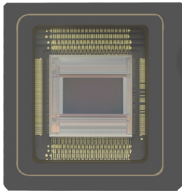
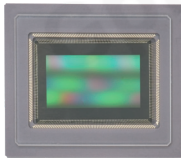
- ✓ High Frame Rate
- ✓ Low noise Global Shutter
- ✓ HDR read out
- ✓ On-chip OB correction
- ✓ Flexible channel multiplexing
- ✓ On-chip 2x2 binning and ROI read out
- ✓ One-Time Programmable memory (OTP)
- ✓ On-chip Sequencer and SPI control

### Applications

- ✓ 3D laser profiling
- ✓ 3D AOI
- ✓ High Speed Inspections
- ✓ Video broadcasting
- ✓ Scientific Imaging

Gpixel

Sensor Specifications



CMOS Image  
Sensors

GSPRINT6502BSI 2MP

GSPRINT4502 2.5MP

GSPRINT4510 10MP

GSPRINT4521 21MP

Pixel	6.5 μm GS	4.5 μm GS	4.5 μm GS	4.5 μm GS
Opt. Format	1"	2/3"	4/3"	1.84" APS-C
Resolution	2048 X 1152	2048 x 1216	4608 X 2176	5120 X 4096
Chroma	Mono	Mono RGB	Mono RGB	Mono RGB qRGB
FWC <sub>max</sub>	20.0 ke <sup>-</sup>	30 ke <sup>-</sup>	30 ke <sup>-</sup>	32 ke <sup>-</sup>
Noise <sub>min</sub>	27.0 e <sup>-</sup>	3.8 e <sup>-</sup>	4 e <sup>-</sup>	3.5 e <sup>-</sup>
DR <sub>max</sub>	57.0 dB	68 dB	68 dB	68 dB
QE <sub>max</sub>	80% @ 430 nm	65.7% @ 515 nm	67% @ 550 nm	63% @ 500 nm
Frame Rate @ADC	1875 fps @ 8 bit 1500 fps @ 10 bit	3462 fps @ 8 bit 1782 fps @ 10 bit 852 fps @ 12 bit	1920 fps @ 8 bit 1000 fps @ 10 bit 480 fps @ 12 bit	1000 fps @ 8 bit 500 fps @ 10 bit 250 fps @ 12 bit
Power	<1.9 W	<2.5 W	<5.0 W	<6.0 W
SLVDS lanes	32 @ 1.2G	64 @ 1.2G	HS: 144 @ 1.2G NS: 72 @ 1.2G	HS: 160 @ 1.2G NS: 96 @ 1.2G
Package	25.7 x 22.4 mm <sup>2</sup> 130p LGA	28.0 x 29.4 mm <sup>2</sup> 255p μPGA	42.0 x 34.0 mm <sup>2</sup> 454p μPGA	42.0 x 42.0 mm <sup>2</sup> 454p μPGA
Availability	ES & EVK	EVK & MP	EVK & MP	EVK & MP

Pin Compatible

Contact

info@gpixel.com  
www.gpixel.com

Gpixel China

Building #5, Optoelectronic  
Information Industrial Park,  
#7691 Ziyou Road, Changchun,  
Jilin, China.  
Tel: +86-431-85077785

Gpixel Europe

Copernicuslaan 60 bus 8  
2018 Antwerpen, Belgium  
Tel: +32-33034442



All rights reserved.  
Subject to change without notice