

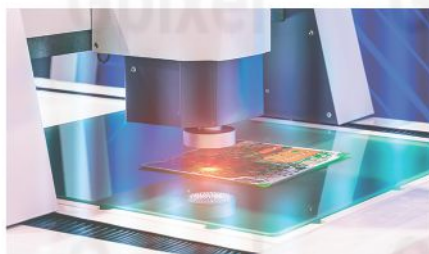
GMAX Series

GLOBAL SHUTTER IMAGE SENSORS WITH
RESOLUTION UP TO 152MP

GMAX HIGH RESOLUTION

The GMAX High Resolution family consists of four CMOS image sensors ranging from 51 MP to 152 MP. All sensors in the family incorporate high-performance charge domain global shutter pixels delivering high quantum efficiency and the low noise pixel architecture achieves >65 dB dynamic range needed for demanding applications like 3D AOI, flat panel inspection, aerial imaging and video applications. Multiple sub-LVDS outputs with multiplexing options allow the user to optimize their camera design for their application's required frame rate. All GMAX High Resolution sensors are available in both color and monochrome variants and are provided in ceramic PGA housing with double sided AR glass lid.

Gpixel's broad and expanding portfolio of high-resolution global shutter image sensors enable our customers to provide optimized solutions to the most demanding inspection and video applications.



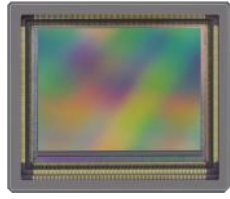
Product Family Features

- ✓ High Frame Rates
- ✓ High Data Rates
- ✓ Flexible ROI read out
- ✓ High Resolution
- ✓ Industry standard sub LVDS outputs with channel multiplexing
- ✓ Optical Black columns and rows
- ✓ On-chip sequencer and SPI control
- ✓ One Time Programmable memory (OTP)

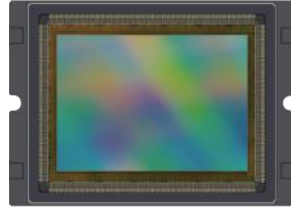
Applications

- ✓ Automation
- ✓ PCB Inspection
- ✓ FPD Inspection
- ✓ Aerial Imaging
- ✓ Video Broadcasting

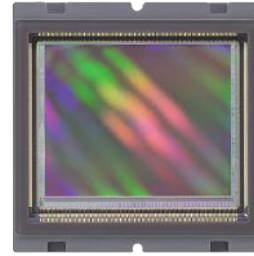
Gpixel Sensor Specifications



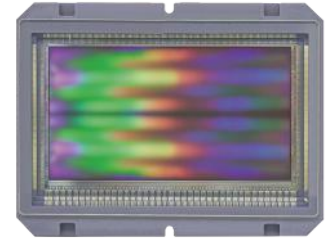
GMAX3249 49MP
GMAX3265 65MP



GMAX4651 51MP



GMAX32103 103MP



GMAX32152 152MP

Pixel	3.2 μm GS	4.6 μm GS	3.2 μm GS	3.2 μm GS
Opt. Format	49MP: APS-H (31.7 mm) 65MP : 35 mm	35 mm	Med Format (47 mm)	Med Format (61 mm)
Resolution	49MP : 7008 x 7000 65MP : 9344 x 7000	8424 x 6032	11276 x 9200	16556 x 9200
Chroma	Mono RGB	Mono RGB	Mono RGB	Mono RGB
FWC_{max}	10.9 ke ⁻	18.0 ke ⁻	9.0 ke ⁻	9.3 ke ⁻
Noise_{min}	1.9 e ⁻	7.6 e ⁻	4.3 e ⁻	4.0 e ⁻
DR_{max}	66.0 dB	65.5 dB	66.4 dB	67.3 dB
QE_{max}	65% @ 500 nm	67% @ 510 nm	67% @ 500 nm	67% @ 500 nm
Frame Rate @ADC	71 fps @ 10 bit 31 fps @ 12 bit	30 fps @ 12 bit	24 fps @ 12 bit	16 fps @ 12 bit
Power	<2300 mW	<2800 mW	<2500 mW	<2800 mW
Interface	HS: 56/28/14/8 sLVDS NS: 28/14/8 sLVDS	24/14/8/6/4 sLVDS	52/26/18/14/10/8 sLVDS	38/20/14/11/8/5 sLVDS
Package	41.7x35.7 mm 239p μ PGA	58.6x42.0 mm 238p PGA	49.5x49.5 mm 209p μ PGA	68.2x52.0 mm 183p μ PGA
Availability	EVK & MP	EVK & MP	EVK & MP	EVK & MP

Contact

info@gpixel.com
www.gpixel.com

Gpixel China

Building #5, Optoelectronic
Information Industrial Park,
#7691 Ziyou Road, Changchun,
Jilin, China.
Tel: +86-431-85077785

Gpixel Europe

Copernicuslaan 60 bus 8
2018 Antwerpen, Belgium
Tel: +32-33034442



All rights reserved.
Subject to change without notice